

VOLUME 106 • 3RD QUARTER 2025

THE SIGNALMAN'S JOURNAL



Union College Benefit **EDVANCE**

Higher Education. Lower Cost.

BRS members and their families can now access accredited, online colleges with tuition savings made just for you.



**For BRS Members
& Families**

Explore the **Union College Benefit**

In partnership with BRS, Edvance offers members and their families access to undergraduate degrees, certificates, and graduate degrees through growing network of regionally accredited colleges and universities.

- ✓ Exclusive tuition discounts for members and their families
- ✓ Over 125+ career-focused degree and certificate programs
- ✓ 100% online to fit busy schedules

Hear From **Real** Union Families.

"Going back to school was a big decision because I didn't want more debt. The Union College Benefit helped a lot. I wouldn't have pursued my bachelor's without my dad's union."

JESS PHILLIS, DAUGHTER OF USW MEMBER AND
TRINE UNIVERSITY GRADUATE

Learn More



unioncollegebenefit.online/brs

The SIGNALMAN'S JOURNAL

Official Publication of the
BROTHERHOOD OF RAILROAD SIGNALMEN
WWW.BRS.ORG

VOLUME 106 • 3RD QUARTER 2025



DIRECTORY

NATIONAL HEADQUARTERS:

917 Shenandoah Shores Road
Front Royal, VA 22630-6418
Phone: (540) 622-6522
Fax: (540) 622-6532
signalman@brs.org

Mike Baldwin, President
(ext. 525) • msb@brs.org

Jim Finnegan, Secretary-Treasurer
(ext. 527) • jmfinnegan@brs.org

Brandon Elvey, Vice President NRAB
(ext. 524) • b.elvey@brs.org

Justin Pier, Grand Lodge Representative
(ext. 567) • j.pier@brs.org

Jeremy Farr, Grand Lodge Representative
(ext. 568) • j.farr@brs.org

Matt Trujillo, Grand Lodge Representative
(ext. 531) • m.trujillo@brs.org

FIELD VICE PRESIDENTS:

Tim Tarrant, Vice President Commuter/Passenger
(ext. 528) • tmt@brs.org

Cory Claypool, Vice President West
(ext. 528) • clc@brs.org

Doug VanderJagt, Vice President East
(ext. 528) • drvanderjagt@brs.org

Kurt Mullins, Vice President Midwest
(ext. 528) • kmullins@brs.org

GOVERNMENT AFFAIRS:

Quinn Norman, Vice President Headquarters
(ext. 528) • r.norman@brs.org

Mike Efaw, National Legislative Director
(ext. 528) • mle@brs.org

Chris Hand, Director of Research
(ext. 566) • c.hand@brs.org

BOARD OF TRUSTEES:

Mike Sullivan, Chairman
60 Oak Place, Babylon, NY 11702
(631) 432-4760

Andy Webb, Secretary
P.O. Box 304, Hohenwald, TN 38462
(931) 628-4129

Aaron Carter, Member
923 NE Woods Chapel Road
Lees Summit, MO 64064
(816) 564-8262

OFFICER EMERITUS:

W. Dan Pickett, President Emeritus

The Signalman's Journal (ISSN-0037-5020) is published quarterly by the Brotherhood of Railroad Signalmen 917 Shenandoah Shores Road, Front Royal, VA 22630-6418.

Periodicals Postage Paid at
Front Royal, VA, and additional offices.

POSTMASTER: Send address changes to:
The Signalman's Journal
The Brotherhood of Railroad Signalmen
917 Shenandoah Shores Road, Front Royal, VA 22630-6418.



UNION BROTHERS

Our annual special section dedicated to our Union Brothers who have served in the U.S. Armed Forces10

| | |
|--|----|
| Belonging to a Union | 3 |
| General Chairmen Vote on Tentative Agreement | 6 |
| BRS and Coalition Unions Inch Closer to a Potential Strike | 7 |
| Commuter Updates | 8 |
| AFL-CIO Do Buy List | 9 |
| Did You Serve in a Branch of the Military? | 13 |
| The Thomson Foundation | 14 |
| Union Plus Scholarship Program | 15 |
| Union Plus Legal Assistance | 15 |
| Your Track to Health — Managing Diabetes | 16 |
| In Memoriam — Melvin B. "Pete" Frye..... | 19 |
| Local 20 Meeting Highlights | 24 |
| Local 129 Meeting Highlights | 24 |
| Locals 49 and 110 Joint Meeting Highlights | 25 |
| Local 16 Meeting Highlights | 25 |
| Financial Secretary Training — June 2025 | 26 |
| Local Chairman Training — July 2025..... | 27 |
| LECMCA — Protecting Transportation Workers Since 1910 | 28 |

| | |
|--|----|
| From the President | 2 |
| From the Secretary-Treasurer | 4 |
| Continuous Membership | 17 |
| Obituaries | 18 |
| Designated Legal Counsel | 20 |
| Benefits Directory | 21 |
| Signalman's Store | 22 |
| Photo Contest Winner for Q3 2025 | 29 |



A fallen tree struck the intermediate signal at M.P. PLE 35.3 in West Ellwood on the Pittsburgh Subdivision, completely knocking the Eastbound and Westbound signal heads off the mast.

Local Chairman Cody Nyegaard (Local 31), along with another Signal Gang member, make needed repairs to the signal mast.

Photo submitted by John Rompala, Member of Local 31.



FROM THE PRESIDENT

— Michael S. Baldwin, BRS President

The Brotherhood of Railroad Signalmen's Constitution:

A Pillar of Union Governance

Sisters and Brothers,

Since the BRS was founded in 1901, the BRS Constitution has been the foundational document that governs this union's structure, responsibilities, and democratic processes.

Purpose and Scope

The BRS Constitution serves as the union's legal and organizational framework. It outlines the rights and responsibilities of members, the duties of elected officers, and the procedures for collective bargaining, grievance handling, and internal governance. It ensures that the union operates transparently, democratically, and in the best interests of its members.

The Constitution also reflects the union's commitment to safety, fairness, and solidarity—core values that guide its advocacy for better working conditions, wages, and benefits.

Organizational Structure

The BRS Constitution defines a hierarchical structure that includes:

- **Local Lodges:** The grassroots level of the union, where members elect local officers and participate in decision-making. (*Article II*)
- **General Committees:** These bodies represent members in negotiations with specific railroads and handle grievances and contract enforcement. (*Article III*)
- **Grand Lodge:** The highest authority, responsible for coordinating national policy, legal matters, and inter-union relations. (*Article I*)

Each level of the Organization has clearly defined roles and responsibilities, ensuring accountability and effective representation.

Key Provisions

The BRS Constitution's most important provisions include:

- **Membership Eligibility and Dues:** Defines who can join the union and the financial obligations of membership. (*Article I, Sections 158–164*)
- **Officer Elections and Terms:** Details the nomination process, term lengths, and duties of union officers. (*Article I, Sections 15–79; Article II, Sections 9–58; Article III, Sections 1–26*)
- **Grievance and Arbitration Procedures:** Establishes how disputes with employers are handled. (*Article I, Section 42; Article III, Sections 1–9*)
- **Discipline and Appeals:** Provides mechanisms for addressing member misconduct and ensuring due process. (*Article IV*)
- **Amendment Process:** Allows members to propose and vote on changes to the Constitution. (*Article I, Sections 130–133*)

Democratic Principles

A hallmark of the BRS Constitution is its emphasis on democratic governance. Members have the right to:

- Vote in union elections.
- Propose amendments to the Constitution.
- Participate in conventions and meetings.
- Hold union office if eligible.

The union holds regular conventions every four years, where delegates from across the country gather to debate and vote on constitutional amendments, policy resolutions, and Grand Lodge Officer elections. This participatory model ensures that leadership is accountable to

the members at each level and that members are able to actively engage with the path the Organization takes between Conventions.

As such, in accordance with the BRS Constitution, *Article I, Section 88*, the Secretary-Treasurer recently notified all Local Lodges of the date and location of the 54th Regular Convention (July 20–24, 2026 in Orlando, Florida).

Significance Today

In an era of rapid technological change and corporate consolidation, the BRS Constitution remains an important living document for protecting workers' rights, and guiding the union's mission, values, and vision for the future. It empowers members to collectively bargain for safer workplaces, fair compensation, and job security. It also provides a legal foundation for challenging unfair labor practices and advocating for stronger rail safety regulations.

The Constitution's enduring relevance is evident in the union's recent actions—such as opposing deregulation efforts and raising concerns about major railroad mergers that could jeopardize safety and worker protections. By codifying democratic principles, organizational integrity, and member empowerment, it ensures that the BRS remains a strong and effective voice for railroad signal workers across North America.

I look forward to seeing you at Convention in Orlando, Florida, next year for a week of building solidarity and deciding the course of the BRS for the future.

In Solidarity,



Michael S. Baldwin — *BRS President*

Belonging to a UNION



***What do my dues pay for?
The Union doesn't do anything for me!
What good is the Union?***



These are all questions we may have asked ourselves or heard others asking.

The truth is, "there is power in a union" and it takes the dues and involvement of all members to maintain that power, strength, and solidarity; a fundamental involvement includes an understanding from all members.

Sign-up at WWW.BRS.ORG

Under MEMBERS click on the Training & Labor Education tab for more information



FROM THE SECRETARY-TREASURER

James M. Finnegan, BRS Secretary-Treasurer

54TH REGULAR Convention

JULY 20, 2026 — JULY 24, 2026



Sisters and Brothers,

Our 54th Regular Convention will begin at 9:30 a.m., Monday, July 20, 2026, and continue through that week at the Hilton Orlando Buena Vista Palace – Disney Springs Area in Orlando, Florida.

Convening the Delegates of our Brotherhood and charting the course of the Organization is a meaningful tradition that should not be taken for granted. It is an opportunity for solidarity, to hear and respect our Brothers' and Sisters' perspectives on moving forward, and to cast our votes to protect and progress our labor movement. The Officers and Staff at Grand Lodge have already begun planning and preparation.

How you, the member, can participate in Convention preparations:

1. Participate in your Local's election of Delegates to Convention. (Article I, Section 100) Then, participate in your Local Meetings and speak with your brothers and sisters about your concerns and perspectives so that you can be represented. **Article I, Section 93, outlines Delegate eligibility.*
2. Submit a location to be considered for our 55th Regular Convention in 2030 by March 23, 2026. "For any city to be considered, the Secretary-Treasurer and/or the Chairman of the Grand Board of Trustees must receive one hundred and twenty (120) days prior to Convention information on room rates, Convention facilities and other information on the city to be nominated." (Article I, Section 89) ***Please reach out to my office for Convention site requirements before you begin researching properties.*
3. Submit an amendment to the Constitution by March 23, 2026. "All proposed amendments to

the Constitution and Ritual to be considered in Convention must be submitted in writing as provided for in Article I, Section 130, and must be placed in the hands of the Secretary-Treasurer at least one hundred twenty (120) days prior to the assembling of such Convention." (Article I, Section 131)

How the Financial Secretary can participate in Convention preparations:

In accordance with Article I, Section 99, of the BRS Constitution, the Secretary-Treasurer will make a determination of the number of Delegates each Local Lodge is entitled to send to Convention using membership numbers as of January 1, 2026. Please ensure when you receive your fourth quarter per capita invoices, that your dues checkoff matches the members listed on your per capita report. If there are discrepancies, contact Membership Specialist Cara Starkey at membership@brs.org, as soon as possible so corrections can be made in time. Changes submitted after January 1, 2026, will not be considered.

How the Recording Secretary can participate in Convention preparations:

Delegate credentials will be emailed to the Recording Secretary of each Local in January. Once your Local has elected Delegates, follow the directions enclosed in that email to ensure it is properly signed and a copy of each credential is sent to the Secretary-Treasurer. (Article I, Section 103) Each delegate will then receive detailed information on accommodations and registration. If you have any questions, please contact my office at (540) 622-6527. ■

It's a great time to get up to speed on your medical plan.



The National Railroad Plans – Health & Welfare Benefits offer valuable coverage for you and your loved ones. By reviewing the basics, you can be ready to make informed decisions ahead of open enrollment.

Act by Sept. 30, 2025, to enter for the chance to **win a \$200 gift card*** – 50 winners will be selected!

It's fast, easy and important.

- Open enrollment is Oct. 1–31, so now is the time to get ready.
- The more you know about your medical plan, the better you can take full advantage of your benefits.
- When you watch a short video to learn more about the Plan, you can enter for the chance to **win a \$200 gift card from either L.L. Bean or Cabela's!**



Scan the code now.

Then sign in or register at YTTH.com/MedPlanSweepstakes, watch the video and enter for the chance to win. Act by Sept. 30, 2025.



Questions? We can help.

For more information, contact **24/7 Nurses & Health Specialists** at **1-866-735-5685**.



24/7 Nurses & Health Specialists

*Void where prohibited by law. Individuals must be 18 or older to participate. No purchase necessary. Prizes may be subject to taxation. Please allow up to 8 weeks for prizes to arrive. For further sweepstakes information, visit yourtracktohealth.com/SweepstakesOfficialRules.

The 24/7 Nurse & Health Specialist service should not be used for emergency or urgent care needs. In an emergency, call 911 or go to the nearest emergency room. The information provided through this service is for informational purposes only. The nurses cannot diagnose problems or recommend specific treatment and are not a substitute for your doctor's care. Please discuss with your doctor how the information provided may be right for you. The service is not an insurance program and may be discontinued at any time.

© 2025 Optum, Inc. All rights reserved. (ES25-4197250c)



General Chairmen Vote on Tentative Agreement

The Brotherhood of Railroad Signalmen (BRS) and the National Carriers Conference Committee (NCCC) have reached a tentative national agreement with the freight railroads. The agreement is subject to ratification by the membership.

If ratified, the agreement will run through December 31, 2029.

“This agreement reflects the priorities of our membership at the national table,” said BRS President Michael Baldwin. *“The final decision rests where it always should — with the members.”*

The BRS ratification process begins with the General Chairmen of the affected membership voting on any TA. Article I, Section 65, of the BRS Constitution addresses the process regarding a TA, in part:

“Tentative agreement reached on national notices shall not be signed for the Brotherhood of Railroad Signalmen until such tentative agreement has been ratified in writing by a majority of the affected General Chairmen. This shall be accomplished by the President convening the General Chairmen. The vote of each affected General Chairman shall be recorded and the action taken will be published

in The Signalman’s Journal. In the event an affected General Chairman fails to attend the ratification meeting, he shall notify the President of the Brotherhood of Railroad Signalmen in writing of his vote for or against ratification.

Upon acceptance by the General Chairmen, the agreement will be submitted to the affected membership for its vote. The membership vote will be by mail or electronic ballot. Majority vote of the ballots returned, by the deadline, will be required to accept or defeat the agreement.”

As such, the vote of the affected General Chairmen was 6-1 on sending the Tentative Agreement out for ratification. Therefore, as provided above, a majority was reached and the Tentative Agreement will be sent to the membership for ratification. ■



| GENERAL COMMITTEE | GENERAL CHAIRMAN | YES | NO |
|-----------------------|------------------|-----|----|
| BNSF | Jeremy Huckabee | X | |
| Illinois Central Gulf | Tom Kauffman | X | |
| Norfolk Southern | Mark Bowen | X | |
| Northeast* | Tim Caldwell* | | |
| Southern Joint | Carlton Everett | X | |
| Union Pacific | Aaron Carter | | X |
| United | Jason Harkleroad | X | |
| Wisconsin Central | Sherron Cook-Bey | X | |

*Abstained from voting



BRS AND COALITION UNIONS INCH CLOSER TO A POTENTIAL STRIKE

The National Mediation Board (NMB) has confirmed that, pursuant to the Railway Labor Act, the Long Island Rail Road (LIRR) and several rail labor unions, including the Brotherhood of Locomotive Engineers and Trainmen (BLET), the Brotherhood of Railroad Signalmen (BRS), the International Association of Machinists and Aerospace Workers (IAMAW), the International Brotherhood of Electrical Workers (IBEW), and the Transportation Communications Union (TCU), were released from statutory mediation on August 18, 2025.

With this release, a mandatory 30-day cooling-off period began on August 19, 2025. Absent voluntary agreements between the parties or intervention by the White House, Governor Hochul, or the parties requesting the establishment of a Presidential Emergency Board (PEB), the Unions and the carrier will be legally permitted to exercise self-help beginning at 12:01 a.m. on September 18, 2025.

At its core, the dispute comes down to this: the LIRR expects members to accept general wage increases that fail to keep pace with the cost of living, even as the Carrier's financial outlook improves. Thanks to New York's Congestion Pricing Program, the LIRR has significantly increased funding and ridership, with passenger levels now approaching pre-pandemic numbers. Additionally, because of the hard work performed daily by its union workforce, LIRR is setting new records for on-time performance.

The Brotherhood of Railroad Signalmen remains committed to reaching a fair agreement that provides real wage increases without concessions. This must reflect the critical work of its members, who play a vital role in ensuring the safety and efficiency of commuter rail service on Long Island. The union will continue to bargain in good faith alongside its coalition unions to secure a contract that recognizes the dedication and professionalism of the railroad workforce. ■



Commuter Updates

Commuter Corner

Port Authority Trans-Hudson (PATH) Unions Form PATH Labor Council

On June 13, 2025, the Unions representing the workforce at PATH recently formed the PATH Labor Council (PLC). The PLC consists of representatives from the Brotherhood of Locomotive Engineers and Trainmen (BLET), Brotherhood of Railroad Signalmen (BRS), American Train Dispatchers Association (ATDA), Teamsters, International Brotherhood of Electrical Workers (IBEW), Transport Workers Union (TWU), Sheet Metal-Air-Rail-Transportation (SMART TD), and the Railway Independent Transit Union (RITU). The PLC is united in its goal to work together and share information to provide the power and solidarity necessary to push back and uplift all PATH workers. The BRS is proud to be part of the PATH Labor Council.

Local 243 Begins Bargaining, Denver Transit Operators (DTO)

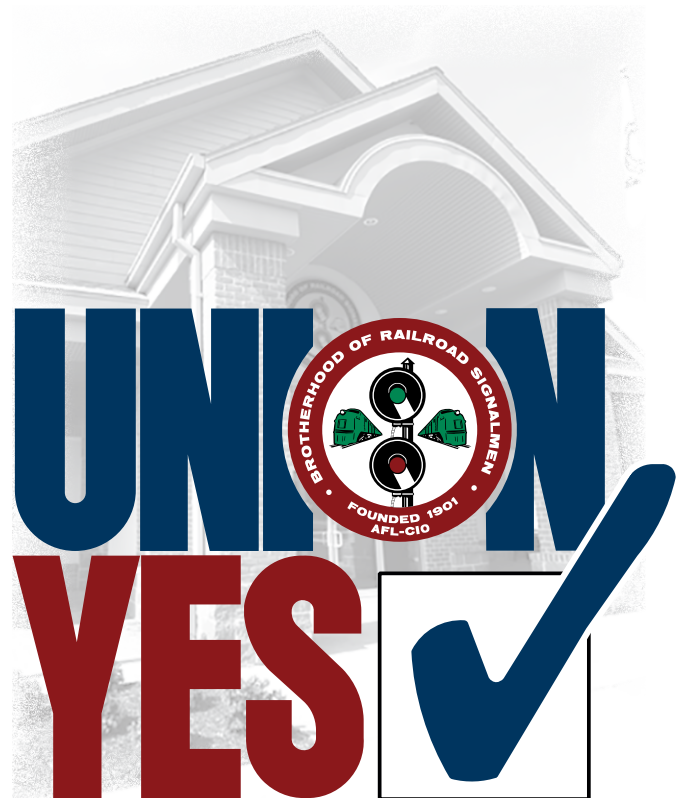
On June 24, 2025, BRS members working for Denver Transit Operators (DTO) in Denver, Colorado, held a preliminary meeting with DTO Officials to kick off bargaining for their next contract. Bargaining for Local 243 members is unique in that its membership encompasses seven different crafts: Dispatchers, Operations Control Coordinators, Facilities Maintenance, Traction Power, Track, Signal, and Communications. The BRS Negotiating Committee encompasses representatives from the Local, General Committee, and Grand Lodge levels and will work diligently towards negotiating an Agreement that recognizes the heavy responsibility and lifesaving work all Local 243 members perform every day.

Local 183 Members (Metra) See Improvements on Catenary Structures

On June 24, 2025, officials from the FRA met with the BRS, BMWED, IBEW, and Metra Management for a status report on the safety issues reported on Metra's catenary structures. Metra reported that wider walkways and wider ladders are currently being

installed on older catenary structures as they are being renewed, and that it is developing a training program for electrical hazards and fall risk. Metra also reported that it is weighing options on what kind of fall arrest system for climbing ladders it will employ, as well as confirming a verbal directive that Signal workers are not permitted to climb until safety mitigation measures are provided. Additionally, Metra reported that it is planning to work with the affected Unions to update its Safety Rules to reflect its changes.

While there is still safety concerns present, including electrical hazards and other signal access issues, Metra's current efforts and directives are a marked improvement. The BRS will continue to be an active partner in ensuring that all safety concerns on Metra's catenary structures are addressed. ■



Back to School



UNION-MADE LUNCH

SANDWICHES

Whether your family loves a classic PB&J or a hearty turkey club, you can use the following union-made fixings to satisfy even the hungriest appetites.

PEANUT BUTTER

- » Peter Pan
- » JIF

JAMS AND JELLIES

- » Sorrell Ridge Jam
- » Smuckers

BREAD

- » Sunbeam Bread
- » Wonder Bread
- » Bimbo Bakery

DELI MEATS

- » Armour Deli
- » Oscar Mayer
- » Boars Head
- » Ball Park

CHEESE

- » Horizon Cheese
- » Kraft Cheese
- » Union Star Cheese

FRUITS, NUTS, AND VEGGIES

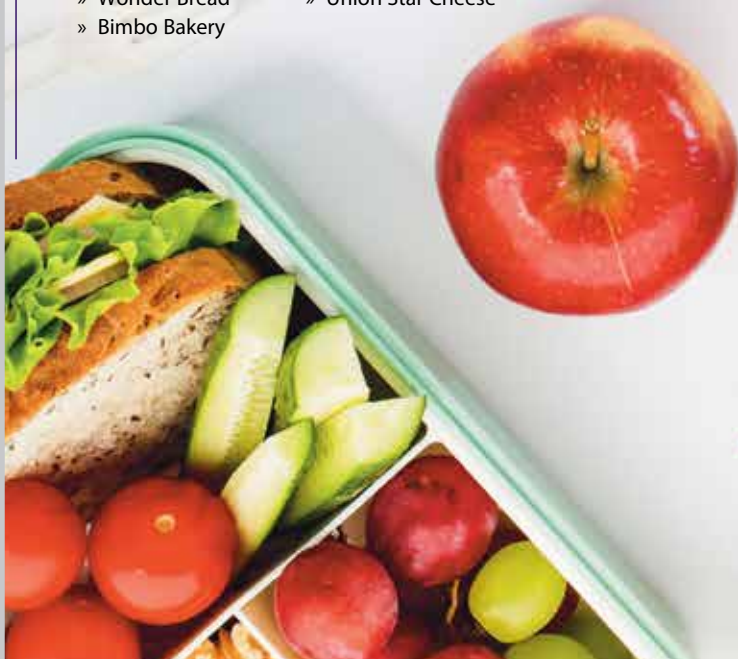
- » Swanton Berry Company
- » Coast Berry Co.
- » Montpelier Almonds
- » Planters Nuts
- » Sunkist
- » Andy Boy
- » Birds Eye

BEVERAGES

- » Capri Sun
- » Juicy Juice
- » Motts
- » Welch's
- » Ocean Spray

CHIPS & SNACKS

- » Keebler Snacks
- » Chips Ahoy
- » Girl Scout Cookies
- » Entenmann's Cookies and snack cakes
- » Otis Spunkmeyer
- » Rold Gold pretzels
- » Utz pretzels
- » Frito-Lay
- » Pirate's Booty
- » Keystone Food Products
- » Mikesell's potato chips
- » Cheez-Its



★ ★ ★ ★ ★ UNION BROTHERS



ALFRED LEIJA

BRS Local 99
BRANCH OF THE MILITARY:
UNITED STATES ARMY



TREVOR SHATEK

BRS Local 226
BRANCH OF THE MILITARY:
UNITED STATES NAVY



JOHN McARTHUR

BRS Local 179
BRANCH OF THE MILITARY:
UNITED STATES ARMY



GRAHAM HANTZ

BRS Local 240
BRANCH OF THE MILITARY:
UNITED STATES ARMY



TED OSTRIHONSKY

BRS Local 43
BRANCH OF THE MILITARY:
UNITED STATES AIR FORCE



TIM TARRANT

BRS Local 183
BRANCH OF THE MILITARY:
UNITED STATES MARINE CORPS

★ ★ ★ ★ ★ UNION BROTHERS



BRIAN WATSON

BRS Local 71
BRANCH OF THE MILITARY:
UNITED STATES AIR FORCE



JOSEPH REED

BRS Local 99
BRANCH OF THE MILITARY:
UNITED STATES NAVY



MICHAEL BALDWIN

BRS Local 138
BRANCH OF THE MILITARY:
UNITED STATES AIR FORCE



KURT MULLINS

BRS Local 228
BRANCH OF THE MILITARY:
UNITED STATES NAVY



BRIAN BOYD

BRS Local 72
BRANCH OF THE MILITARY:
UNITED STATES ARMY



TIM SINGLETON

BRS Local 94
BRANCH OF THE MILITARY:
UNITED STATES ARMY

★ ★ ★ ★ ★ UNION BROTHERS



REMO MELUCCI

BRS Local 56
BRANCH OF THE MILITARY:
UNITED STATES ARMY



GUY GUENTHER

BRS Local 84
BRANCH OF THE MILITARY:
UNITED STATES MARINE CORPS



STEVEN LITTERIELLO

BRS Local 20
BRANCH OF THE MILITARY:
UNITED STATES ARMY



JUSTIN PIER

BRS Local 161
BRANCH OF THE MILITARY:
UNITED STATES AIR FORCE



CHARLES FLANNERY

BRS Local 57
BRANCH OF THE MILITARY:
UNITED STATES NAVY



JOSHUA ERWIN

BRS Local 110
BRANCH OF THE MILITARY:
UNITED STATES ARMY

★ ★ ★ ★ ★ UNION BROTHERS



RODNEY MONTALVO

BRS LOCAL 56
BRANCH OF THE MILITARY:
UNITED STATES ARMY



JIM FINNEGAN

BRS LOCAL 8
BRANCH OF THE MILITARY:
UNITED STATES AIR FORCE



CHARLES VAN BELLE

BRS LOCAL 188
BRANCH OF THE MILITARY:
UNITED STATES ARMY



DID YOU SERVE *in a Branch of the Military?*

If so, please send in your photo(s) so you may be included in next year's 2026 annual "special edition" of *The Signalman's Journal*. The issue will highlight BRS members who are veterans, reservists, etc., featuring your photo and honoring your service to our country.

Name: _____

Local: _____

Branch of the Military: _____

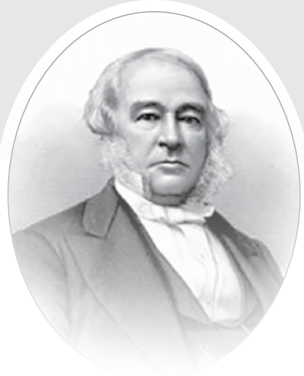
*Please email your photo for the 2026 Veteran's Special
to tme@brs.org or mail prints to the address below.*

The Brotherhood of Railroad Signalmen
917 Shenandoah Shores Road, Front Royal, VA 22630



FRANK JONES, JR.

BRS LOCAL 77
BRANCH OF THE MILITARY:
UNITED STATES NAVY



The Thomson Foundation

Financial Assistance for Daughters of Deceased Railroad Employees

John Edgar Thomson was the third president of the Pennsylvania Railroad and led the company from 1852 to 1874. Although John

Thomson never had children of his own, he often pondered on the difficulties of orphaned girls. In that era, a fatherless boy could usually get a trade school education or find employment; a girl had little opportunity for either.

In his will, Mr. Thomson dedicated a portion of his estate in the form of a trust fund for the education and maintenance of female orphans of railway employees whose fathers may have died while in the discharge of their duties. After his death in 1874, the trust fund was established for the daughters of men killed in railroad service. Subsequently, The John Edgar Thomson Foundation was founded when Mrs. Thomson opened a girl's boarding school in Philadelphia, Pennsylvania, in December of 1882.

Today, the Foundation continues its objective by providing aid to a substantial number of girls throughout the United States in the form of financial assistance and healthcare benefits. To be eligible, the employee must

have been actively employed by any United States railroad at the time of his or her death; the cause does not need to be work related. Eligibility is also dependent on the daughter and the surviving parent remaining unmarried. Family income and expenses are also considered when determining eligibility.

The monthly allowance made under the grant may cover the period from infancy to high school graduation, and in some circumstances to age 24, to assist the grantees that are pursuing a higher education. The Foundation also offers special healthcare benefits.

Funding for the work of the Foundation is completely independent of any railroad. It neither solicits nor receives funds from the public. ■

Further information and applications may be obtained by writing to:

The John Edgar Thomson Foundation

201 S. 18th Street, Suite 318

Philadelphia, PA 19103

Telephone: (215) 545-6083

Fax: (215) 545-5102 • Toll free: (800) 888-1278

Email: sjethomson@aol.com

Website: www.jethomsonfoundation.com

Brotherhood of Railroad Signalmen

Our Dedication Extends Beyond the Tracks

As Signalmen, we are not just committed to excellence in our craft; we're equally passionate about enriching and supporting the communities we call home.

We would like to showcase the strength and compassion of our Brotherhood. Share your stories and photos of giving back — through community service or the moments where you have made a difference.

Signalmen are not only leaders on the rails, but also champions in their communities.

Send photos and stories to info@brs.org

Attention: Justin Pier



Scholarship Program

ELIGIBILITY — Current and retired members of participating unions, their spouses, and their dependent children (as defined by IRS regulations). At least one year of continuous union membership by the applicant, applicant's spouse or parent (if applicant is a dependent). The one-year membership minimum must be satisfied by May 31, of the scholarship year.

APPLICATION TIMELINE — Applications are available starting in mid-June, and a complete application must be received on or before 12:00 p.m. (Eastern Time) on January 31, of the scholarship year. Applications received after this deadline will not be considered.

SCHOLARSHIP AWARD AMOUNTS — Amounts range from \$500 to \$4,000. These one-time cash awards are for study beginning in the Fall of 2026. Students may re-apply each year.

AWARD DATE — The Scholarship Committee will determine recipients of scholarship awards by May 31 each year. During the first week of June award recipients will be individually notified by mail, and all applicants will be sent an email with notification that the award list is posted. Please note that due to the volume of applications we cannot provide any information on the status of an application before award announcements are made.

OUTSTANDING SCHOLARSHIP RECIPIENTS

The students selected for university, college, trade or technical school scholarships represent a wide sampling of backgrounds, union affiliations, goals and accomplishments. The selection process is very competitive since we receive thousands of applications each year. ■

To receive mobile text alerts about education-related deadlines and information, text STUDENT to 22555.

www.unionplus.org/benefits/money/union-plus-scholarships



Legal Assistance



www.unionplus.org/benefits/home/legal-help

For a fee, as low as \$19.95 a month, you'll have access to a network of experienced attorneys.

- Unlimited access to legal assistance
- Expert legal advice and representation, in person or by phone
- Network of over 18,000 attorneys
- No limitations such as hour or dollar caps on covered matters
- Digital estate planning to create wills, living wills and powers of attorney in as little as 15 minutes

Already enrolled?

For billing inquiries and membership status

Call 800-339-0616

Every step counts for managing diabetes.

With the National Railroad Plans – Health & Welfare Benefits, you have access to resources that can help support you in whatever way you need.

Scan this code to see a checklist of health steps recommended by the American Diabetes Association (ADA).



Medical Benefits

Whether you have medical benefits through Aetna, Highmark or UnitedHealthcare, you have coverage for checkups and diabetes tests, including:

- A1C
- Hearing test
- Kidney test
- Foot checks
- Cholesterol check



1-800-842-4044¹

1-888-332-8742²

8 a.m. – 8 p.m. ET, Mon. – Fri.

aetna.com



1-866-267-3320

8 a.m. – 8 p.m. ET, Mon. – Fri.

myhighmark.com



1-800-842-9905¹

1-888-445-4379²

8 a.m. – 8 p.m. ET, Mon. – Fri.

myuhc.com[®]

¹ The Railroad Employees National Health and Welfare Plan

² The SMART-TD Health and Welfare Plan

Dental Benefits

Coverage for teeth and gum cleaning – make sure your dentist knows you have diabetes

1-877-277-3368

8 a.m. – 6 p.m. ET, Mon. – Fri.

aetna.com



Vision Benefits

Coverage for dilated eye exams and retinopathy

1-855-212-6003

7:30 a.m. – 11 p.m. ET, Mon. – Fri.

8 a.m. – 11 p.m. ET, Sat.

11 a.m. – 8 p.m. ET, Sun.

eyemedvisioncare.com/railroad



Prescription Drug Benefits

Optum Rx[®] pharmacy services help make it easier to save on medications and keep track of them

1-800-356-3477 | 24/7

optumrx.com



Your Track to Health 24/7 Nurses & Health Specialists

Available at no additional cost to answer questions and connect you to nurses and wellness coaches who specialize in diabetes

1-866-735-5685 | 24/7



One Pass Select[™]

Access thousands of gyms and fitness centers nationwide with a single membership

1-877-515-9364

8 a.m. – 9 p.m. CT, Mon. – Fri.

OnePassSelect.com



Behavioral Health Benefits

Contact a Behavioral Health Advocate who can connect you to an available provider for confidential support for mental well-being

1-866-850-6212 | 24/7

liveandworkwell.com

(access code: Railroad)



The 24/7 Nurses and Health Specialists service should not be used for emergency or urgent care needs. In an emergency, call 911 or go to the nearest emergency room. The information provided through this service is for informational purposes only. The nurses cannot diagnose problems or recommend specific treatment and are not a substitute for your doctor's care. Please discuss with your doctor how the information provided may be right for you. The service is not an insurance program and may be discontinued at any time.

© 2025 Optum, Inc. All rights reserved. (ES25-4054550c)



Continuous Membership



The Brotherhood of Railroad Signalmen, in recognition of BRS members' contributions to the Signalman's craft and their dedication to the principle of trade unionism, has established a Continuous Service program to honor longtime BRS members. Continuous Service lapel pins are presented to members every five years, beginning with their 25th year of membership.

The following is a list of the active members who recently received Continuous Service pins in recognition of their years as BRS Members:

50 YEARS OF SERVICE

Kevin Schoepf _____ 119

45 YEARS OF SERVICE

Ed Roiniotis _____ 130

James Bailey _____ 102

Mac Truluck _____ 16

40 YEARS OF SERVICE

Ardith Craft _____ 33

Chuck Warren, Jr. _____ 49

James Hodge _____ 49

Roger Webb _____ 33

Steven Mitchell _____ 188

35 YEARS OF SERVICE

Andrew Corbett, Jr. _____ 129

C. Rapp _____ 129

Dan Richards _____ 119

Darren Girard _____ 87

Dennis Cobb _____ 183

Greg Nurnberg _____ 20

Gregg Carlson _____ 129

Jeff Pankey _____ 129

Jim Henderson _____ 94

John Clarke _____ 173

John Mojarro _____ 19

Joseph Fazio _____ 143

Leon Hudson _____ 77

M. Kittleson _____ 29

35 YEARS OF SERVICE

Mario Jorge _____ 120

Nestor Kolodij _____ 53

Paul Prenosil _____ 5

Richie Young _____ 129

Robert Payne _____ 8

Ronald Ockman _____ 141

Sean Jones _____ 14

Steve Land _____ 72

Wallace Avin, Jr. _____ 16

30 YEARS OF SERVICE

Alan Sheppard _____ 25

Andy Durkee _____ 174

Charles Allen _____ 20

Chris Morgan _____ 228

Danny Ho _____ 20

Dean Porter _____ 19

Eric Harribine _____ 213

Frank Caputo _____ 84

Frederick Bedard _____ 188

Haresh Kadirwell _____ 84

James Diehl _____ 33

Joe Hayes _____ 206

Joshua Trask _____ 232

Mark Culver _____ 84

Myron Riha _____ 72

Natividad Esquivel _____ 20

Ralph Holmes, Jr. _____ 141

Russ Hoedebecke _____ 191

Seth Johnson _____ 84

William MacIsaac _____ 188

25 YEARS OF SERVICE

Bill Lynch _____ 234

Bill McKeenan _____ 191

Brad Oldham _____ 141

Brian Hammett _____ 234

Carl Vancil _____ 72

Carlos Betancourt _____ 16

Chad Walker _____ 206

Charlie Denham, Jr. _____ 174

Chris Shanks _____ 141

David Ward _____ 155

Edgar Sanchez, Jr. _____ 141

Garrett Eckhardt _____ 174

George Ledbetter _____ 174

Greg Walker _____ 206

James Ross _____ 206

John Kirkendall _____ 8

Jon Broster _____ 234

Mario Velez _____ 19

Michael Snoreck _____ 20

Mike Albrecht _____ 8

Mike Kinsey _____ 141

Mike Miller _____ 72

Nathaniel Jenkins _____ 16

Randy Iverson _____ 97

Scott Scarpinato _____ 99

Shannon Mancil _____ 157

Tony Silipena _____ 84

Travis Honey _____ 206

Troy Glover _____ 60

Welton Murray, Jr. _____ 99

OBITUARIES

GLEN C. BANZHAF—retired member of **LOCAL 121**.

Brother Banzhaf retired in 1999 after 40 years of service with the Atchison, Topeka & Santa Fe Railway and BNSF Railway Company. Brother Banzhaf was a Signal Inspector at Temple, Texas, at the time of his retirement. Brother Banzhaf served as Local Chairman and Local President. Brother Banzhaf is a U.S. Army Veteran.

BRIAN L. BOOKHOUT—active member of **LOCAL 240**.

Brother Bookhout had 31 years of service with the Delaware & Hudson and New York, Susquehanna & Western Railways. Brother Bookhout was a Signal Maintainer at Deposit, New York, at the time of his passing. Brother Bookhout served as Local Chairman and Local Trustee.

HARRIS K. BORSLIEN—retired member of **LOCAL 227**.

Brother Borslien retired in 1997 after 42 years of service with the Soo Line Railroad and Canadian Pacific Railway. Brother Borslien was a Signalman at Marquett, Iowa, at the time of his retirement. Brother Borslien served as Local President. Brother Borslien is a U.S. Army Veteran.

DARYL F. CABLE—retired member of **LOCAL 110**.

Brother Cable retired in 2019 after 17 years of service with the Norfolk Southern Railway. Brother Cable was a Signal Maintainer at the time of his retirement.

TIMOTHY “TIM” W. DAVIS—active member of

LOCAL 94. Brother Davis had 28 years of service with CSX Transportation. Brother Davis was a Signal Foreman at Sumner, Illinois, at the time of his passing.

OTIS DUCKSWORTH—active member of **LOCAL**

183. Brother Ducksworth had 31 years of service with the Belt Railway Company of Chicago and Metra. Brother Ducksworth was a Signal Maintainer at Metra’s Electric District (67th Street), at the time of his passing.

JAMES “JIM” R. FITZGERALD—retired member of

LOCAL 132. Brother Fitzgerald retired in 2015 after 39 years of service with the Alton & Southern Railway. Brother Fitzgerald was a Signalman at East St. Louis, Illinois, at the time of his retirement. Brother Fitzgerald served as Recording-Financial Secretary.

DANIEL “DAN” R. FRANK—retired member of **LOCAL**

20. Brother Frank retired in 2004 after 41 years of service with the Burlington Northern Railroad and BNSF Railway Company. Brother Frank was a Signal Maintainer at Ferryville, Wisconsin, at the time of his retirement.

TRAVIS H. HENDERSON—active member of **LOCAL**

141. Brother Henderson had 32 years of service with the Union Pacific Railroad. Brother Henderson was a Signal Foreman at the time of his passing.

ARNOLD “DALE” D. HUMPHRIES—retired member

of **LOCAL 121**. Brother Humphries retired in 2013 after 22 years of service with the Atchison, Topeka & Santa Fe Railway and BNSF Railway Company. Brother Humphries was an Electrician at the time of his retirement. Brother Humphries is a U.S. Navy Veteran.

MICHEAL “MIKE” D. JENSEN—retired member of

LOCAL 20. Brother Jensen retired in 2010 after 32 years of service with the Burlington Northern Railroad and BNSF Railway Company. Brother Jensen was a Signal Foreman at Montgomery, Illinois, at the time of his retirement.

DAVID A. KRAUSE—retired member of **LOCAL 10**.

Brother Krause retired in 2002 after 39 years of service with the New York Central Railroad, Penn Central Transportation Company, and Conrail. Brother Krause was a Construction Foreman at Detroit, Michigan, at the time of his retirement. Brother Krause served as Recording-Financial Secretary. Brother Krause is a U.S. Army Veteran.

TOBY A. LYNCH—active member of **LOCAL 161**.

Brother Lynch had 3 years of service with the BNSF Railway Company. Brother Lynch was a Signal Maintainer at Pampa, Texas, at the time of his passing.

PATRICK L. MARTIN—active member of **LOCAL 106**.

Brother Martin had 30 years of service with Amtrak. Brother Martin was a Signal Maintainer at Lancaster, Pennsylvania, at the time of his passing.

DAWAIN D. REESE—active member of **LOCAL 49**.

Brother Reese had 10 years of service with the Norfolk Southern Railway. Brother Reese was a Signal Maintainer at Atlanta, Georgia, at the time of his passing.

ROGER “DALE” D. SNELLEN—retired member of

LOCAL 71. Brother Snellen retired in 2009 after 36 years of service with the Seaboard Systems Railroad and CSX Transportation. Brother Snellen was a System Signalman at the time of his retirement. Brother Snellen is a U.S. Army Veteran.

STEVEN L. WORKMAN—retired member of **LOCAL 20**.

Brother Workman retired in 2012 after 33 years of service with the Burlington Northern Railroad and BNSF Railway Company. Brother Workman was a Signal Maintainer at Sesser, Illinois, at the time of his retirement.

ROBERT “BOB” D. ZEIS—retired member of **LOCAL**

228. Brother Zeis retired in 2004 after 34 years of service with the Monon Railroad and Norfolk Southern Railway. Brother Zeis was a Signal Foreman at Fort Wayne, Indiana, at the time of his retirement. Brother Zeis is a U.S. Army Veteran.

IN MEMORY

of those who are forever in our hearts.

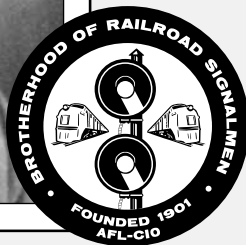
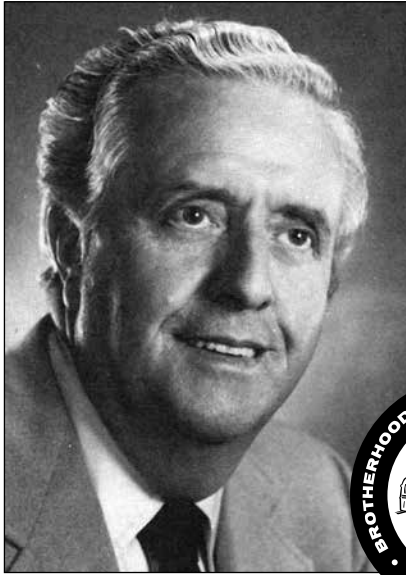
EDITOR’S NOTE:

Please notify Grand Lodge of the passing of BRS members.

email: membership@brs.org

In Memoriam

MELVIN B. "PETE" FRYE 1923–2025



With deep respect and lasting gratitude, the Brotherhood of Railroad Signalmen honors the life and legacy of Brother Melvin B. "Pete" Frye, who passed away on July 4, 2025, at the age of 101. Brother Frye was one of the pillars of our craft and our cause, a man whose contributions helped shape union leadership and advocacy training.

Born in Thomasville, Pennsylvania, Pete began his railroad career in 1941 with the Pennsylvania Railroad. In 1946, he entered signal service on the Southern Pacific Railroad's Rio Grande Division. By 1947, he had earned his Signalman seniority and soon became a proud member of Local 182.

He was elected to the Grievance Committee in 1953 and became Local Chairman in 1954.

His dedication led to his appointment as State Legislative Representative for New Mexico in 1958. Later that year, he was appointed Grand Lodge Representative, where he began preparing and presenting cases before the National Railroad Adjustment Board (NRAB).

In 1967, Pete was elected Vice President at Grand Lodge Headquarters, a position he held with distinction for nearly two decades. During his tenure, Brother Frye championed the development of training programs for Local Chairmen and General Committee Officers.

In 1972, he launched the BRS's first official Local Chairmen Training Seminar, helping Officers across the country better serve their members. His seminars were carefully prepared and grounded in experience and became a cornerstone of our union education.

Pete's commitment to labor education extended beyond the Brotherhood. He studied at the Arbitration Institute at the University of Illinois, attended AFL-CIO Civil Rights Seminars from 1976 to 1984, and taught grievance handling under the Railway Labor Act at the University of Illinois' Circle Campus. In 1983, he participated in the Education Institute at the George Meany Center for Labor Studies, where he also helped lead national-level training programs for General Chairmen.

Brother Frye retired on May 31, 1984, concluding a remarkable chapter of union service. He and his wife Terri moved to Salem, Oregon, to be closer to their children. Though records of his later life are limited, his legacy lives on in the systems that continue to educate and empower our Union Officers today.

We often say that the strength of our Brotherhood lies not just in our contracts, but in the character of the people who uphold them. By that measure, Brother Pete Frye was among the strongest we've ever known. His life stood as a testament to the values we hold dear: solidarity, education, justice, and an unwavering commitment to the working class. ■



BRS DESIGNATED COUNSEL

ON-THE-JOB INJURY | FELA | RAIL LABOR | INFO | LAW
RAILROAD SIGNALMEN | EMPLOYEE RIGHTS | CLAIM

When Signalmen suffer a work-related injury or illness, BRS members or their families are encouraged to determine their rights and benefits under the Federal Employers' Liability Act (FELA) before agreeing to any settlement with the railroad employer. The Brotherhood of Railroad Signalmen has designated the attorneys listed in this directory to serve as qualified counsel for BRS members in employee injury cases covered by FELA.

ALABAMA

W.C. Tucker, Jr.
Maples, Tucker & Jacobs, LLC
2001 Park Place North
Suite 1325
Birmingham, AL 35203
Tel. (205) 322-2333
(855) 617-9333
www.mtandj.com

F. Tucker Burge, Sr.
Burge & Burge, PC
2001 Park Place
Suite 1350
Birmingham, AL 35203
Tel. (205) 251-9000
(800) 633-3733
www.burge-law.com

ARKANSAS

Chris Christy
Christy • Ferguson
201 W. Broadway Street
Suite G12
North Little Rock, AR 72114
Tel. (501) 758-0278

CALIFORNIA

Jay A. Kaplan
Kaplan Law Corporation
1901 Avenue of the Stars
19th Floor
Century City, CA 90067
(800) 552-7526
www.kaplanlawcorp.com

Anthony S. Petru
Hildebrand, McLeod & Nelson
5335 College Avenue
Suite 5A
Oakland, CA 94618
(800) 447-7500
www.hmnlaw.com

COLORADO

Jeffrey Chod
Chod Law Office
P.O. Box 17727
Denver, CO 80217
Tel. (314) 541-5862
www.chodlawfirm.com

DISTRICT OF COLUMBIA

Larry Mann
Alper & Mann, PC
9205 Redwood Avenue
Bethesda, MD 20817
Tel. (202) 298-9191
(800) 747-6266

FLORIDA

Howard A. Spier
Rossman, Baumberger,
Reboso, & Spier, PA
9155 S. Dadeland Boulevard
Suite 1200
Miami, FL 33156
Tel. (305) 900-5493
www.rbirlaw.com

ILLINOIS

F. Daniel Petro
Petro & Harrington, LLC
150 S. Wacker Drive
Suite 2400
Chicago, IL 60606
Tel. (312) 332-9596
(800) 472-5729
www.petrofelalaw.com

Daniel J. Downes
Cavanagh Law Group
161 N. Clark Street
Suite 2070
Chicago, IL 60601
Tel. (312) 425-1900
www.cavanaghlawgroup.com

MARYLAND

P. Matthew Darby
Darby Law Group, LLC
201 International Circle
Suite 200
Hunt Valley, MD 21030
Tel. (833) 601-3473
www.darby-lawgroup.com

MASSACHUSETTS

Robert T. Naumes
Naumes Law Group
2 Granite Avenue
Suite 425
Milton, MA 02186
Tel. (617) 227-8444
(844) 826-8445
www.naumeslaw.com

MICHIGAN

Benjamin J. Wilensky
Sommers Swartz, PC
1 Towne Square
Suite 1700
Southfield, MI 48076
Tel. (248) 746-4024
(866) 520-1649
www.sommerspc.com

MINNESOTA

Randal W. LeNeave
Hunegs, LeNeave & Kvas
1000 Twelve Oaks
Center Drive, Suite 101
Wayzata, MN 55391
Tel. (612) 339-4511
(800) 328-4340
www.hklaw.com

Fredric A. Bremseth
Bremseth Law Firm
601 Carlson Parkway
Suite 1050
Minnetonka, MN 55305
Tel. (952) 475-2800
(800) 545-3733
www.bremseth.com

MISSOURI

Gene C. Napier
Hunegs, LeNeave & Kvas
1712 Main Street
Suite 266
Kansas City, MO 64108
Tel. (913) 484-3884

Drew C. Baebler
The Baebler Firm, LLC
11878 Gravois Road
St. Louis, MO 63127
Tel. (314) 270-9900
www.raillaw.com

NEW YORK

Marc Wietzke
Flynn & Wietzke, PC
1205 Franklin Avenue
Garden City, NY 11530
Tel. (516) 877-1234
(866) 877-3352
www.felaattorney.com

OHIO

Andrew J. Thompson,
Shapero | Roloff Co., LPA
1111 Superior Avenue East
Suite 1310
Cleveland, OH 44114
Tel. (216) 781-1700
(800) 321-9199
www.shaperoroloff.com

PENNSYLVANIA

Michael J. Olley
Coffey, Kaye, Myers & Olley
Two Bala Plaza
Suite 718
Bala Cynwyd, PA 19004
Tel. (610) 668-9800
(800) 334-2500
www.ckmo.com

Don P. Palermo
Palermo Law Offices
111 North Olive Street
Media, PA 19063
Tel. (215) 499-2957
www.palermolaw.org

TEXAS

Weldon Granger
Jones Granger

Robert M. Tramuto
Jones Granger
10000 Memorial Drive
Suite 888
Houston, TX 77210
Tel. (713) 668-0230
(800) 231-3359
www.jonesgranger.com

VIRGINIA

Willard J. Moody, Jr.
The Moody Law Firm
500 Crawford Street
Suite 200
Portsmouth, VA 23704
Tel. (757) 393-4093
(800) 368-1033
www.moodyrllaw.com

WASHINGTON

James K. Vucinovich
Rossi Vucinovich, PC
1000 Second Avenue
Suite 1420
Seattle, WA 98104
(425) 646-8003
(866) 357-7245
www.rvflegal.com

WISCONSIN

Nicholas D. Thompson
Casey Jones Law Firm
3520 Cherryvale Avenue
Suite 83
Appleton, WI 54913
Tel. (612) 293-5249
www.caseyjones.law

BRS members are encouraged to provide information regarding FELA cases, including criticism or recommendations regarding the service of designated counsel, and information on injuries and settlements.

This information, which will be used in the continuing evaluation of this program, should be sent to:

*Michael S. Baldwin, President
Brotherhood of Railroad Signalmen
917 Shenandoah Shores Road
Front Royal, VA 22630-6418*

*Attorneys are listed by state and are designated to serve BRS members living or working in the general region of their offices.
Designation of FELA counsel is by authority of the BRS Executive Council only.*

BENEFITS DIRECTORY

INSURANCE | CLAIMS | GROUP POLICIES | INFO
HEALTH | RAILROAD RETIREMENT | PLANS
PHARMACY BENEFIT

Your Track to Health

www.yourtracktohealth.com



Whether you want to better understand your plan and coverage, access a form, add a dependent, or research retirement benefits, it's easy to find the information you need on this site.

(NOTE: Information on this site only applies to employees under National Handling.)

HEALTH & WELFARE PLANS

National Health & Welfare Plan — GA-23000

Managed Medical Care Programs (MMCP) & Comprehensive Health Care Benefit (CHCB)

United Healthcare

1-800-842-9905

www.myuhc.com

Retiree Claims — GA-46000

UnitedHealthcare

1-800-842-5252

Retiree Supplemental — GA-23111

UnitedHealthcare

1-800-842-5252

Aetna

1-800-842-4044

Highmark Blue Cross Blue Shield

Railroad Dedicated Unit

1-866-267-3320

www.bcbs.com

LIFE INSURANCE

MetLife

1-800-310-7770

www.metlife.com

MENTAL HEALTH & SUBSTANCE ABUSE BENEFITS

United Behavioral Health

For treatment, claims or inquiries call:

1-866-850-6212

www.liveandworkwell.com

ACCESS CODE: Railroad

SUPPLEMENTAL SICKNESS BENEFITS

The Hartford

1-800-205-7651

<https://abilityadvantage.thehartford.com>

VISION BENEFITS

EyeMed

Member Support

1-855-212-6003

www.eyemedvisioncare.com/railroad

DENTAL BENEFITS

Aetna

1-877-277-3368

www.aetna.com

MANAGED PHARMACY BENEFIT

Optum Rx®

Optum Rx® works with your plan to help you get the medication you need. Use your online account to find a network pharmacy, set up home delivery, view your ID card and more. UnitedHealthcare Plans GA-23000 and GA-46000.

1-844-368-8736

optumrx.com

RAILROAD RETIREMENT BOARD

Automated Help Line

1-877-772-5772

www.rrb.gov

UNION PLUS

Union Plus Mortgage Company • AT&T Discount Credit Card • Scholarships • Free College Insurance Discounts, and more.

www.unionplus.org

SIGNALMAN'S STORE



BRS WATCHES — Gold BRS logo on the face.

NAVY WINDSHIRT — 100% polyester microfiber with 100% nylon taffeta lining. Includes side seam pockets.

GOLF SHIRTS — are constructed from wrinkle resistant, snag-proof, fade resistant material.

CANVAS COAT — Made of 100% cotton canvas with BRS colorlight logo embroidered in red and green. Available in black or brown.

WOOL/LEATHER BRS JACKETS — Heavyweight wool shell, nylon lining, with leather sleeves and collar. Embroidered four-color BRS emblem. Available in black only.

Make check or money order payable to:
Brotherhood of Railroad Signalmen

MAIL PAYMENT AND ORDER TO:

BRS Online Store
P.O. Box 220690
Chantilly, VA 20153
(703) 788-2566

| ITEM DESCRIPTION | QUANTITY | PRICE | TOTAL |
|------------------------|----------|--------|-------|
| BRS Flag (3' x 5') | | 85.00 | |
| BRS Flag (2'x3') | | 54.50 | |
| Golf Balls (pack of 3) | | 10.50 | |
| Coffee Mug | | 8.00 | |
| Pocket Watch | | 94.50 | |
| Wrist Watch | | 120.00 | |
| Mantle/Desktop Clock | | 136.00 | |
| Magnet | | 6.00 | |
| Keychain/Bottle Opener | | 4.00 | |

| HATS | QUANTITY | PRICE | TOTAL |
|---------------------|----------|-------|-------|
| Cap (camo/orange) | | 20.75 | |
| Cap (black dye sub) | | 18.00 | |

| APPAREL | S | M | L | XL | 2X | 3X | 4X | PRICE | TOTAL |
|-------------------------------|---|---|---|----|----|----|----|---------|-------|
| NEW—Union Proud T-Shirt | | | | | | | | \$20.00 | |
| NEW—Golf Shirt (black w/logo) | | | | | | | | 50.00 | |
| NEW—Golf Shirt (blue w/logo) | | | | | | | | 50.00 | |
| NEW—Golf Shirt (sage w/logo) | | | | | | | | 50.00 | |
| NEW—Golf Shirt (rust w/logo) | | | | | | | | 50.00 | |
| NEW—Golf Shirt (olive w/logo) | | | | | | | | 50.00 | |
| NEW—Half Quarter Zip | | | | | | | | 55.00 | |
| Navy Windshirt | | | | | | | | 57.50 | |
| Black Wool & Leather Coat | | | | | | | | 201.00 | |
| Black Canvas Coat | | | | | | | | 90.00 | |
| Brown Canvas Coat | | | | | | | | 90.00 | |
| Grey Sweatshirt | | | | | | | | 31.50 | |
| Navy Softshell Jacket | | | | | | | | 96.50 | |

| CLEARANCE | S | M | L | XL | 2X | 3X | 4X | PRICE | TOTAL |
|--------------------------------------|---|---|---|----|----|----|----|-------|-------|
| Service T-Shirt (burgundy) | | | | | | | | 18.00 | |
| Service T-Shirt (grey) | | | | | | | | 15.00 | |
| Golf Shirt (black w/logo) | | | | | | | | 37.50 | |
| Golf Shirt (burgundy w/logo) | | | | | | | | 37.50 | |
| Golf Shirt (navy w/logo) | | | | | | | | 37.50 | |
| Golf Shirt (steel blue w/logo) | | | | | | | | 37.50 | |
| Golf Shirt (women's burgundy w/logo) | | | | | | | | 37.50 | |

NAME _____

STREET _____

CITY _____ STATE _____ ZIP _____

PHONE _____ EMAIL _____ CERTIFICATE # _____

ORDER ONLINE AT WWW.BRS.ORG

SIGNALMAN'S STORE



UNION PROUD T-SHIRT



DESIGN ON BACK
OF SWEATSHIRT



GREY SWEATSHIRT



QUARTER ZIP



GOLF SHIRT (BLACK)



GOLF SHIRT (BLUE)



GOLF SHIRT (SAGE)



GOLF SHIRT (RUST)



GOLF SHIRT (OLIVE)



BROWN CANVAS COAT



**BLACK WOOL
& LEATHER COAT**



**NAVY SOFT
SHELL JACKET**



BLACK CANVAS COAT



CAPS



POCKET WATCH



WRIST WATCH



MANTLE CLOCK

MEETING PHOTOS



Local 20 Meeting

Hannibal, Missouri



Local 129 Meeting

Springfield, Missouri



MEETING PHOTOS



Locals 49 & 110 Joint Meeting • • • • •

Knoxville, Tennessee



Local 16 Meeting • • • • •

Columbia, South Carolina



TRAINING PHOTOS



Financial Secretary Training • • • • •

Front Royal, Virginia — JUNE 2025



TRAINING PHOTOS



Local Chairman Training

Front Royal, Virginia — JULY 2025



PROVIDER OF WAGE LOSS PROTECTION TO RAILROAD SIGNALMEN SINCE 1923

NEW LOWER RATES!

The best coverage and member benefits at the lowest rates in the industry!

- **20% Discount** when you pay annually.
- **10% Discount** when you pay semi-annually.
- **\$100 cash reward** for referring a co-worker!
- Our new No. 365 policy gives you 365 days of coverage immediately. No waiting.
- Accidental Death coverage on-and-off the job, for you and your beneficiary at no extra charge.*
- Generous Loyalty Appreciation program with rewards at retirement.

Hear it from the source...

"LECMPA has helped my members significantly. There are many ambiguous reasons why our members are disciplined on the job. Good, hardworking members can be targeted for no reason. This is when LECMPA can help. They can give you a paycheck in the times when the company you work for decides not to. LECMPA has always been there to help and is a great way to provide income protection."

- John Heise, BRS B&O General Chairman



Protecting transportation workers **since 1910.**

800.514.0010 | underwriting@lecmpa.org | lecmpa.org

*Beneficiary Accidental Death Coverage not available in Texas or California.



PHOTO CONTEST

WINNER FOR 3rd QUARTER 2025



A combination of local and adjoining maintenance forces, repairing vandalized/ stolen pole line on Raton Subdivision around Starkville, Colorado. Multiple days of climbing poles and clearing brush to make repairs.

Photo submitted by Justin Malden, Signal Inspector and Local Chairman of Local 161.



FIND US ON FACEBOOK





104 CHANCES TO WIN!



Featuring USA's
**2-GUNS
A-WEEK
SWEEPSTAKES!**



ONE BIG IMPACT FOR CONSERVATION



Learn More & Get Your Calendars

UnionSportsmen.org/calendar-2026-usa